



Reveal the **personality** of your **patients**



Global D

Global D is a French company which specialises in the design, manufacture and supply of high quality **medical devices** for maxillofacial and pre-implant surgery, orthodontics and dental implantology.

We are passionate about what we do, and we develop **close relationships with our customers**. In addition to our products, which we develop in close collaboration with experienced surgeons, we support all our users in developing their skills. With this in mind we have set up a large network of colleagues, and we offer a variety of events, meetings and training courses to give our customers the **opportunity to share their knowledge**.

We also make every effort to ensure the **professionalism** and **expertise of our teams**, who are responsible for providing advice and service to the surgeons who use our products.

With the remarkable synergy between our areas of activity, we provide high added value in terms of expertise in the field of bone surgery devoted to facial harmony and an attractive smile.

Global D - ZI de Sacuny
118 av. Marcel Mérieux - 69530 Brignais - FRANCE
tél. +33(0)4 78 56 97 00 - fax +33(0)4 78 56 01 63

www.globald.com



Made in **FRANCE**

SCREWS	4
CARCITEK CONTAINER	5
PLATES	6
INSTRUMENTS - SHAPING	10
INSTRUMENTS - SCREWING	12

INDICATIONS

Mandibular bone stabilization and fixation during osteosynthesis and the consolidation period bone in the following situations:

- mandibular fractures,
- mandibular bone defects.

The previously listed medical conditions can be treated by:

- trauma surgery,
- surgical reconstruction.



Radio of the Gustave Roussy Institute (Paris, France) - Mandibular reconstruction

The **CARCITEK** range has been developed in collaboration with Dr Frédéric **KOLB** from the Gustave Roussy Institute - 1st center in Europe for the cancer treatment - Villejuif (94 - France).

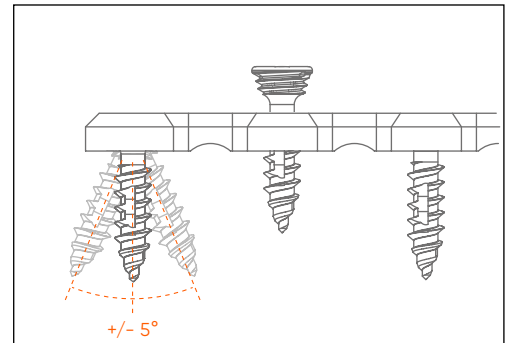
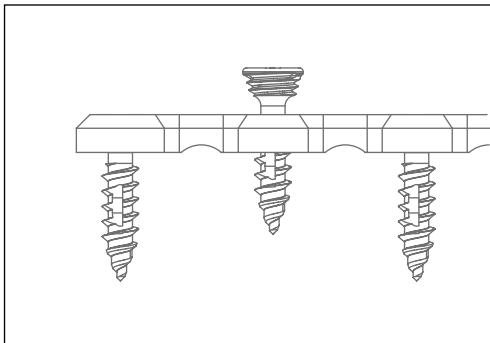
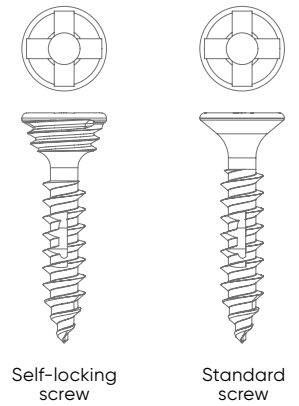
The Self-locking and Standard screws

Principle:

The self-locking thread under the head secures the screw to the plate.

Interests:

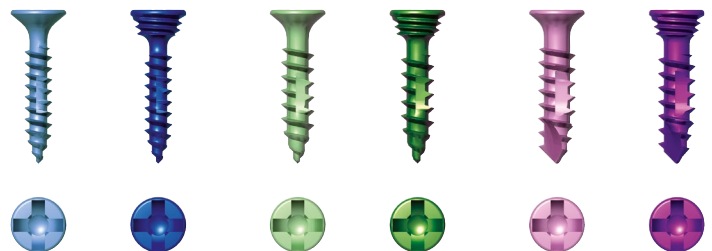
- Avoids stress on the bone under the plate.
- Reduces the risk of loosening and mobility of the screw thanks to a functional stability linked to the locking of the screw in the plate.
- Simplifies surgical reconstruction.
- Increases the stability of the fixation in the presence of poor bone quality or limited space.



- The maximum permitted tightening torque depending on the diameter of the initial screw (in mm) is:

	Ø Screw	Max. tightening torques
Self-drilling	Ø2.0 mm	25N.cm
	Ø2.4 mm	60N.cm
Self-tapping	Ø2.7 mm	100N.cm






The range



All screws with a diameter of 2 and 2.4 mm are self-drilling. Screws 2.7 are self-tapping.

PLATES

Plates thickness: 1,5 mm

	Associated screws Ø 2 mm	Associated screws Ø 2,4 mm	Colour	Thickness	Bridge width	Between- shaft
Standard	CAVA2KL(x) 	CAVA2.4KL(x) 		1,5 mm	3 mm	6,35 mm
Self-locking	CAVBA2KL(x) 	CAVBA2.4KL(x) 				

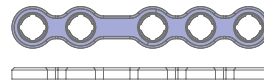
The screws are available with length (x) of: 7 - 8 - 9 - 11 - 13 - 15 - 17 - 19 and 21 mm.



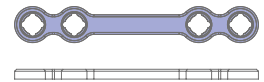
All screws with a diameter of 2 and 2.4 mm are self-drilling. Screws 2.7 are self-tapping.

Ramus area

scale 1



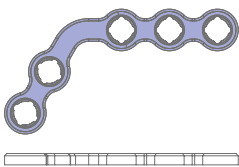
CAPFB3-2TM



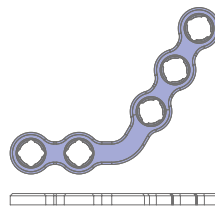
CAPFB4TL

Mandibular angle area

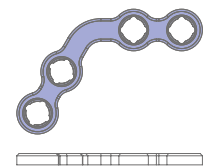
scale 1



CAPFBL3-2T



CAPFBR3-2T



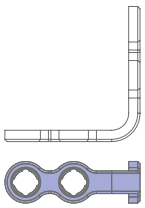
CAPFBLR4T

PLATES

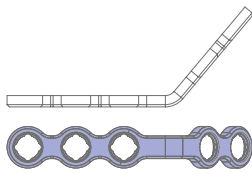


Symphysis area

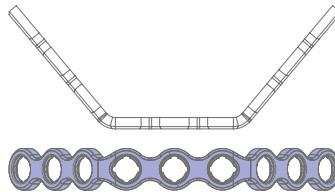
scale 1



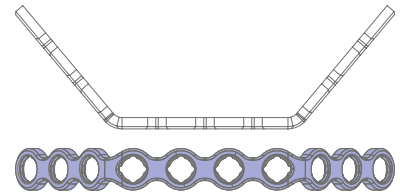
CAPFBV4TL



CAPFBV3-2T



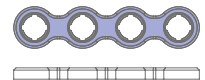
CAPFBU9T



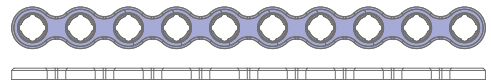
CAPFBU10T

Universal plates

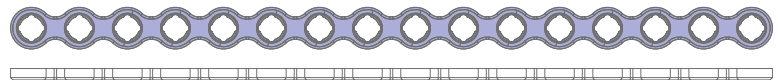
scale 1



CAPFB4T



CAPFB10T








CAPFB16T



The 1.5 mm plates can be used with the CAV2.7KL(x) and CAVB2.7KL(x) screws.

PLATES

Plates thickness: 2,5 mm

	Associated screws Ø 2,4 mm	Associated screws Ø 2,7 mm	Colour	Thickness	Bridge width	Between- shaft
Standard	CAVA2.4KL(x) 	CAV2.7KL(x) 		2,5 mm	4,5 mm	9,52 mm
Self-locking	CAVBA2.4KL(x) 	CAVB2.7KL(x) 				

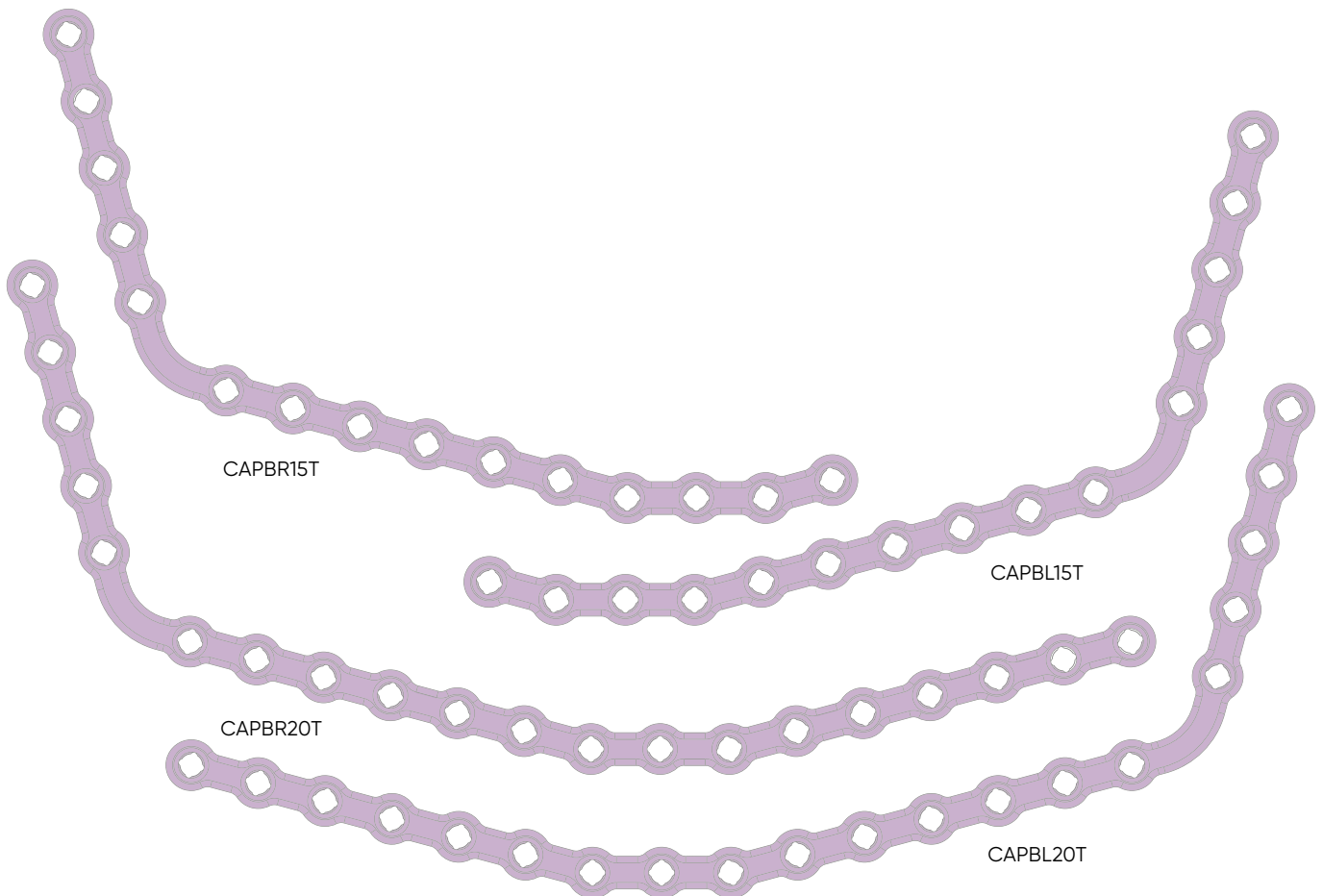
The screws are available with length (x) of: 7 - 8 - 9 - 11 - 13 - 15 - 17 - 19 and 21 mm.



All screws with a diameter of 2 and 2.4 mm are self-drilling. Screws 2.7 are self-tapping.

Half arch

scale 1

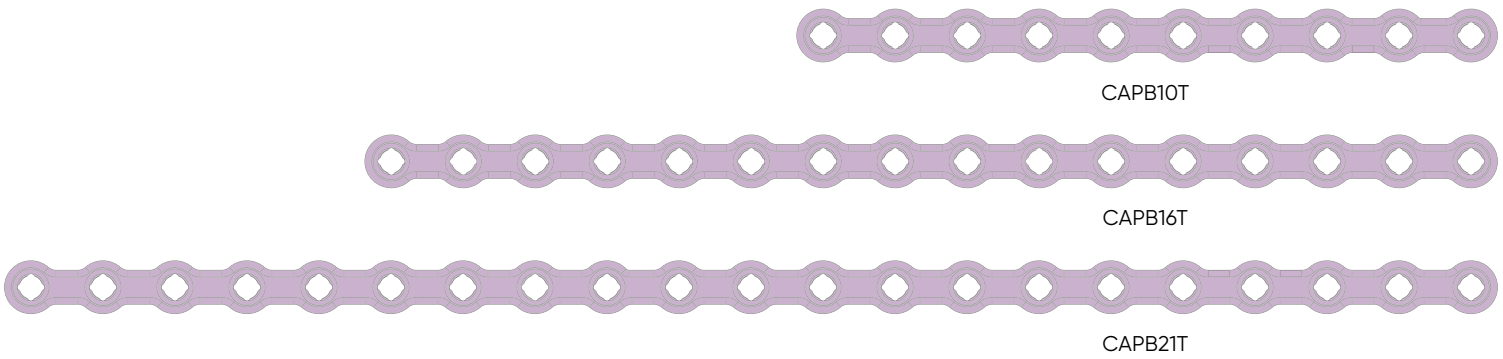


PLATES



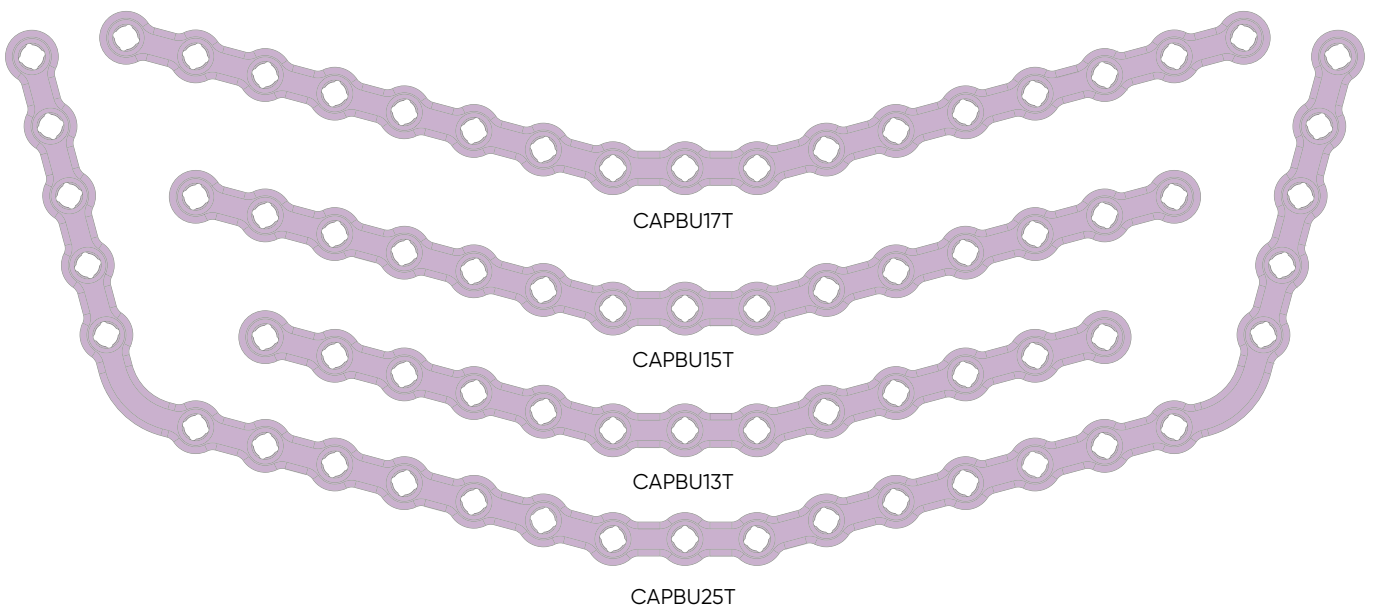
Universal plates

scale 1



Complete arch

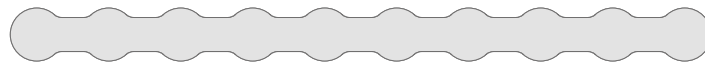
scale 1



The 2.5 mm plates can be used with the CAVA2KL(x) and CAVBA2KL(x) screws.

The trial devices

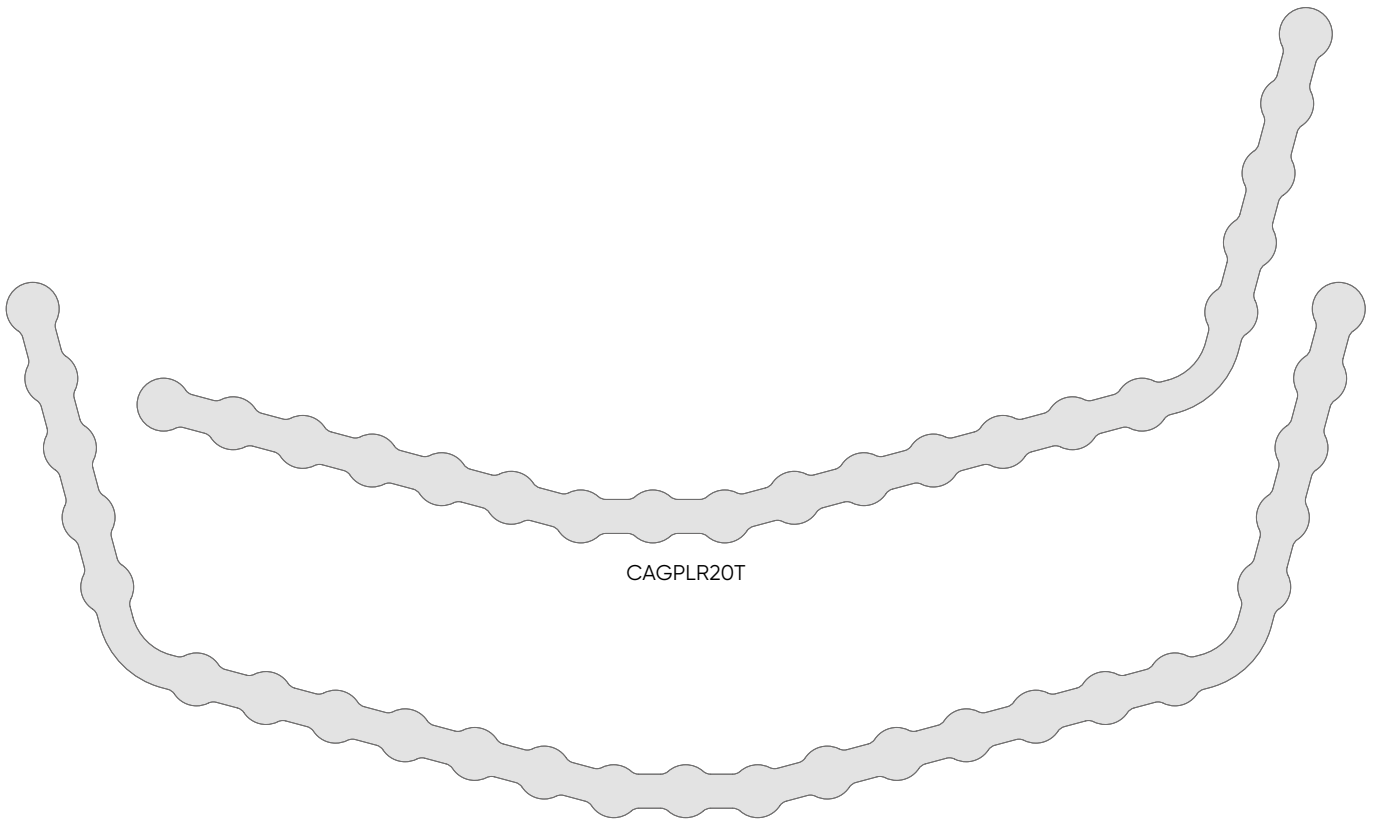
Reusable and autoclavable stainless steel plates used by the physician to determine the exact plate reference he will have to use and to allow a pre-shape step of the plate before implanting it.



CAGP10T



CAGP21T



CAGPLR20T

CAGPU25T

Multiple pliers

Multiple forceps for bending*

Reference

CAPMM-2



1,5 & 2,5 mm



Adaptable bending forceps*

Reference

CAP3T-2



1,5 & 2,5 mm

Gripping instrument**

Reference

PPH-2



1,5 & 2,5 mm



Legend:

Moulding



Folding



Bending



Gripping






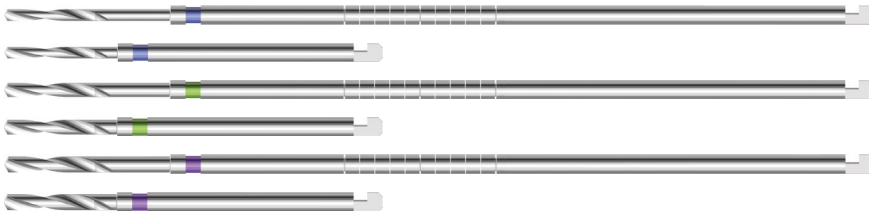
* Medical device manufactured by OURY-GUYE et Fils and distributed by GlobalD.

** Medical devices manufactured by Kohdent Roland Kohler Medizintechnik GmbH & Co and distributed by GlobalD

INSTRUMENTS – SCREWING

Drills

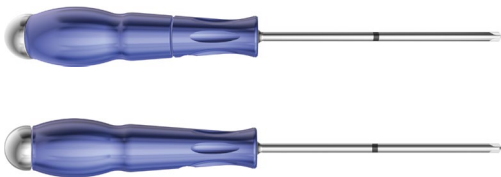
	Associated screw diameter	Colour	Diameter	Drilling length	Total length	Ref. Number
Standard	2 mm		1,5 mm	15 mm	50 mm	CAFO1.5B15
Transbuccal				22 mm	115 mm	CAFO1.5-115
Standard	2,4 mm		1,8 mm	15 mm	50 mm	CAFO1.8B15
Transbuccal				22 mm	115 mm	CAFO1.8-115
Standard	2,7 mm		2 mm	15 mm	50 mm	CAFO2.0B15
Transbuccal				22 mm	115 mm	CAFO2.0-115



Handpiece mounting (stryker tip).

Screwdriver

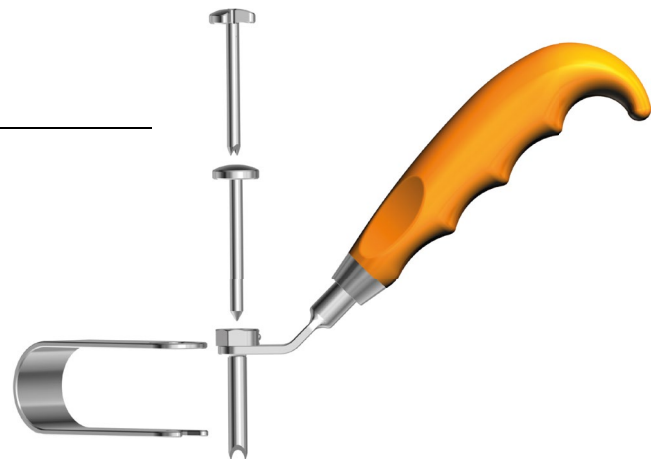
Mobile or fixed handle + CATK shaft



Manche	Empreinte	Diamètre de vis associée	Références Manches	Référence Axe
Mobile	Cruciforme	2, 2,4 & 2.7	MM2	CATK
Fixe			MF2	

Transbuccal

TRANSJ2.7



ORDER FORM

For any order, please send us back this form by fax to +33 (0) 478 56 01 63

Name	City	Country
Tel.	Ordered by	Title
Surgeon name	Patient code	Date
Order number	Container N°	
Renewal + invoicing <input type="checkbox"/>	Invoicing only <input type="checkbox"/>	

RECONSTRUCTION / CANCEROLOGY

CAVA2KLx	CAVBA2KLx	CAVA2.4KLx	CAVBA2.4KLx	CAV2.7KLx	CAVB2.7KLx
7					7
8					8
9					9
11					11
13					13
15					15
17					17
19					19
21					21

VIS/SCREW Ø2mm
VIS/SCREW Ø2.4mm
VIS/SCREW Ø2.7mm

The concept

To meet your expectations and the requirements for traceability, Global D provides an ergonomic sterile packaging solution.

We provide a selection of the most commonly used combinations of osteosynthesis plates and screws, specifically designed for maxillofacial surgery.



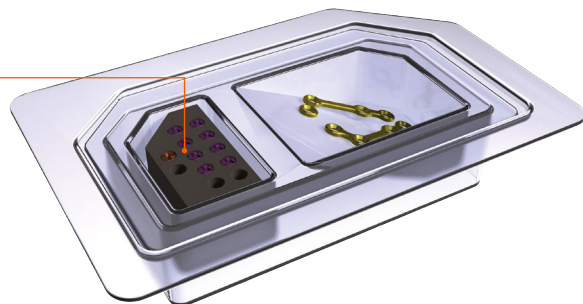
List of existing combination on request.



Le pack

Each pack can hold one or several plates.

The **screw holder** is packed inside the lidded double blister and can hold up to 12 screws. This system enables an easy and secure selfretaining prehension of the screws.

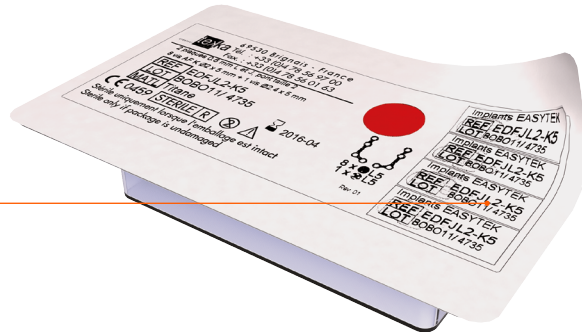


The advantages

Traceability

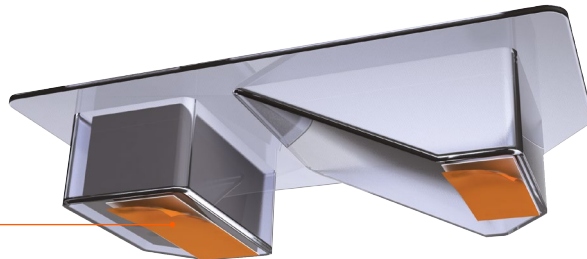
The information concerning manufacturing, product reference and batch number is easily identifiable.

Each pack contains **4 self-adhesive labels** specifically designed for the clinic/hospital and patient medical files. All the information is therefore preserved enabling reliable and effective traceability of the implanted products.



Simplicity & Ergonomy

- The "ready-to-use" solution of sterile products
- Optimisation of preparation costs (cleaning, disinfection, sterilisation)
- Ease of handling and storage optimisation
- Clear and legible labelling
- **Adhesive tapes** under the pack for stable fixation to the table enabling easy impaction of the screws



Safety

- Double packaging, sterilised using gamma rays
- Sterilisation indicator
- CE marking
- Traceability via batch number

The products presented are CE-marked class I, IIa and IIb Medical Devices intended for healthcare professionals in Cranio-Maxillo-Facial Surgery. They are intended for cranio-maxillofacial bone stabilization and fixation during osteosynthesis and the bone consolidation period. The CE conformity assessment was carried out by GMED (CE0459).

Please consult the instructions for use before use.

The instructions for use are available in electronic form. A QR code and a URL link can therefore be found on the device label. The paper instructions for use are nevertheless available on simple request to the following address: quality@globald.com and at no extra charge within 7 days.

The medical devices shown may not be available for sale in all countries. In case of doubt, or for any further information, please contact the Global D sales department.

Some products presented are manufactured by other manufacturers and distributed by GlobalD. These products are Class I, Ir, and IIa and are CE marked by their respective manufacturers in accordance with Regulation (EU) 2017/745 and/or Directive 93/42/EEC.

DOMAINES D'ACTIVITÉ FIELDS OF APPLICATION

Implantologie | Implantology

Chirurgie orale | Oral surgery

Chirurgie pré-implantaire | Pre-implant surgery

Chirurgie orthognathique | Orthognathic surgery

Chirurgie reconstructrice | Reconstructive surgery

Chirurgie traumatologique de la face | Facial trauma surgery

Chirurgie carcinologique | Cancer surgery

Cranio-chirurgie | Craniomaxillofacial surgery

Orthodontie | Orthodontics

Formation | Training



Global D

ZI de Sacuny
118 Avenue Marcel Mérieux
Brignais - France

Tél. +33 (0)4 78 56 97 0

fax +33 (0)4 78 56 01 63

www.globald.com

MC-CARCTEK-EN-ED2-24
CATALOG-0080-V02-02